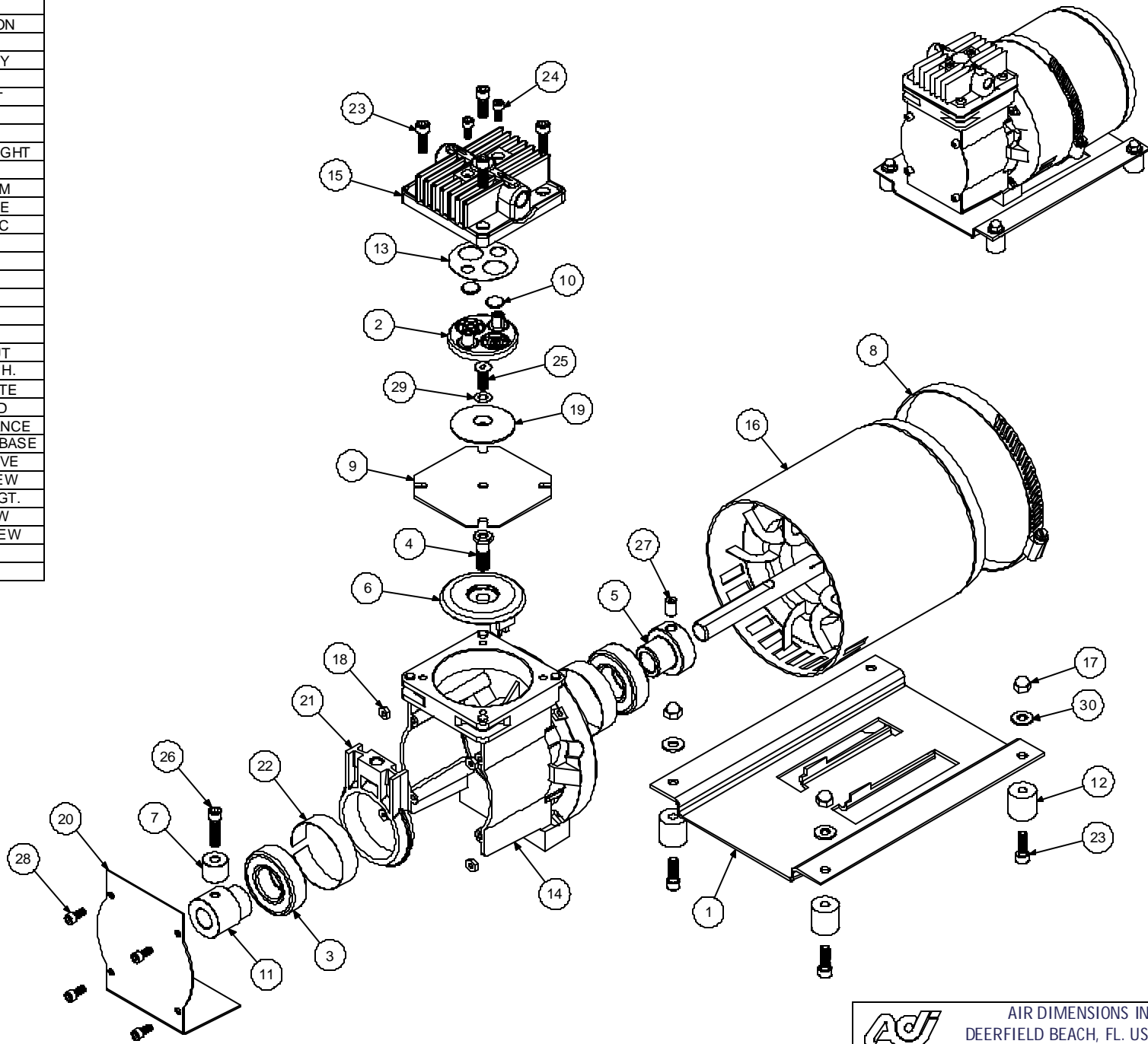



Parts List			
ITEM	QTY	PART #	DESCRIPTION
1	1	A02001	BASE
2	1	A02005	VALVEBODY
3	2	A02011	BEARING
4	1	A02014	ROD BOLT
5	1	A02033	BUSHING
6	1	A03001	CAP
7	1	A03002	COUNTERWEIGHT
8	1	A03003	CLAMP
9	1	A04001	DIAPHRAGM
10	2	A04004	DISC-VALVE
11	1	A05001	ECCENTRIC
12	4	A06001	FOOT
13	1	A07001	GASKET
14	1	A08001	HOUSING
15	1	A08003	HEAD
16	1	A13001	MOTOR
17	4	A14001	CAP NUT
18	4	A14003	MOTOR NUT
19	1	A16001	PLATE-DIAPH.
20	1	A16007	COVER PLATE
21	1	A18001	CONN. ROD
22	2	A18002	RING-TOLERANCE
23	8	A19005	SCREW-HEAD/BASE
24	2	A19006	SCREW-VALVE
25	1	A19007	PLATE SCREW
26	1	A19009	SCREW, CWGT.
27	1	A19010	SET SCREW
28	4	A19013	COVER SCREW
29	1	A23001	WASHER
30	4	A23004	WASHER

ALTERNATE PARTS	
PART #	DESCRIPTION
A02006	VALVEBODY - 316ss
A02006	VALVEBODY - ALUM
A02007	VALVEBODY - CARP 20
A02009	VALVEBODY - 316ss TFE CO
A02010	VALVEBODY - ALUM TFE CO
A02019	VALVEBODY - CARP 20 TFE CO
A02023	VALVEBODY - HAST C
A02024	VALVEBODY - HAST C TFE CO
A04001	DIAPHRAGM - TEFLON/EPDM
A04002	DIAPHRAGM - EPDM
A04003	DIAPHRAGM - VITON
A04009	DIAPHRAGM - TEFLON/VITON
A04011	DIAPHRAGM - 3 PLY TEFLON
A08003	HEAD - 316ss
A08004	HEAD - ALUM
A08005	HEAD - CARP 20
A08007	HEAD - 316ss TFE CO
A08008	HEAD - ALUM TFE CO
A08009	HEAD - CARP 20 TFE CO
A08020	HEAD - HAST C
A08021	HEAD - HAST C TFE CO
A16001	PLATE - 316ss
A16002	PLATE - ALUM
A16003	PLATE - CARP 20
A16005	PLATE - 316ss TFE CO
A16006	PLATE - ALUM TFE CO
A16019	PLATE - CARP 20 TFE CO
A16020	PLATE - HAST C
A16021	PLATE - HAST C TFE CO



 AIR DIMENSIONS INC. DEERFIELD BEACH, FL. USA 33442 WWW.AIRDIMENSIONS.COM		
TITLE Single Head Dia-Vac		
8/15/2001	MODEL # Rxx1-xx-Axx	DWG NO Rxx1-xx-Axx