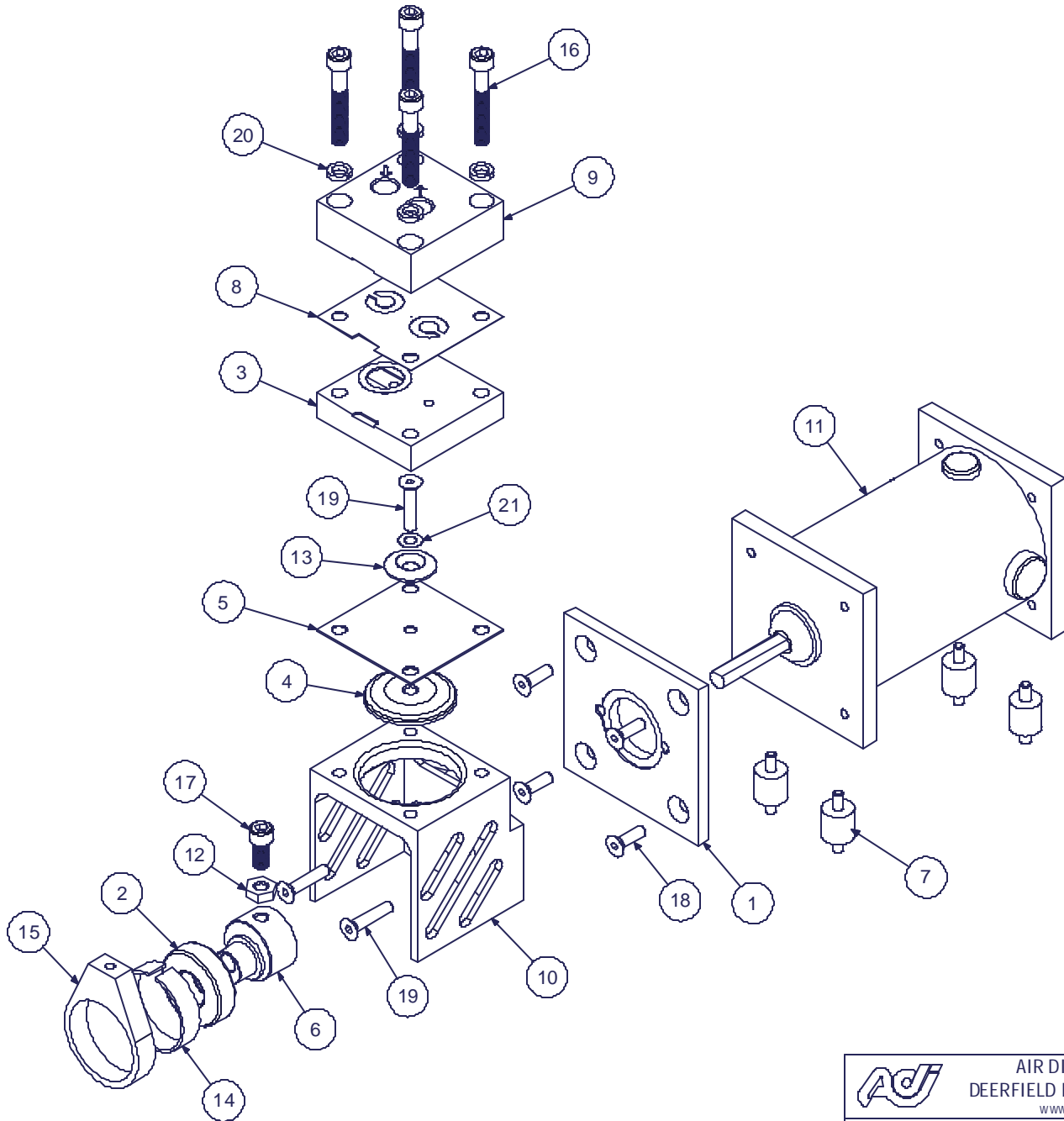



| Parts List |    |        |                 |
|------------|----|--------|-----------------|
| ITE        | QT | PART # | DESCRIPTION     |
| 1          | 1  | A01401 | ADAPTOR         |
| 2          | 1  | A02411 | BEARING         |
| 3          | 1  | A02465 | VALVEBODY       |
| 4          | 1  | A03461 | CAP             |
| 5          | 1  | A04461 | DIAPHRAGM       |
| 6          | 1  | A05401 | ECCENTRIC       |
| 7          | 4  | A06401 | FOOT            |
| 8          | 1  | A07411 | GASKET          |
| 9          | 1  | A08403 | HEAD            |
| 10         | 1  | A08461 | HOUSING         |
| 11         | 1  | A13405 | 24vDC MOTOR     |
| 12         | 1  | A14401 | COUNTERWEIGHT   |
| 13         | 1  | A16461 | PLATE           |
| 14         | 1  | A18402 | TOLERANCE RING  |
| 15         | 1  | A18461 | CONNECTING ROD  |
| 16         | 4  | A19405 | HEAD SCREW      |
| 17         | 1  | A19411 | ECCENTRIC SCREW |
| 18         | 4  | A19418 | SCREW           |
| 19         | 3  | A19467 | PLATE SCREW     |
| 20         | 4  | A23402 | WASHER          |
| 21         | 1  | A23461 | WASHER          |



| ALTERNATE PARTS |                                  |
|-----------------|----------------------------------|
| PART #          | DESCRIPTION                      |
| A02460          | VAL-VEBODY - ALUM TFE CO         |
| A02465          | VAL-VEBODY - 316ss               |
| A02466          | VAL-VEBODY - ALUM                |
| A02468          | VAL-VEBODY HEATED - ALUM         |
| A02469          | VAL-VEBODY - 316ss TFE CO        |
| A02473          | VAL-VEBODY HEATED - ALUM TFE CO  |
| A02475          | VAL-VEBODY HEATED - 316ss        |
| A02477          | VAL-VEBODY HEATED - 316ss TFE CO |
| A02481          | VAL-VEBODY - KYNAR (PVDF)        |
| A03411          | HEATER - 115v 25 WATT            |
| A03412          | HEATER - 115v 50 WATT            |
| A03413          | HEATER - 220v 35 WATT            |
| A04401          | DIAPHRAGM - TEFLON/EPDM          |
| A04402          | DIAPHRAGM - EPDM                 |
| A04461          | DIAPHRAGM - 2 PLY TEFLON         |
| A08403          | HE AD - 316ss                    |
| A08404          | HE AD - ALUM                     |
| A08407          | HE AD - 316ss TFE CO             |
| A08408          | HE AD - ALUM TFE CO              |
| A08480          | HE AD - KYNAR (PVDF)             |
| A16461          | PLATE - 316ss                    |
| A16462          | PLATE - ALUM                     |
| A16465          | PLATE - 316ss TFE CO             |
| A16466          | PLATE - ALUM TFE CO              |
| A16482          | PLATE - KYNAR (PVDF)             |
| A19467          | SCREW - 316ss                    |
| A19472          | SCREW HEATED - 316ss TFE CO      |
| A19473          | SCREW ELEV - 316ss TFE CO        |
| A19474          | SCREW - 316ss TFE CO             |
| A19476          | SCREW HEATED - 316ss             |
| A19477          | SCREW ELEV - 316ss               |

|   |  |                       |
|---|--|-----------------------|
|  | AIR DIMENSIONS INC.<br>DEERFIELD BEACH, FL. USA 33442<br>WWW.AIRDIMENSIONS.COM |                       |
|   | TITLE <b>Single Head 12/24vDC Micro</b>  |                       |
| 4/26/2001   | MODEL #<br>B161-FT-JH0   | DWG NO<br>B161-FT-JH0 |